

A

B

C

D

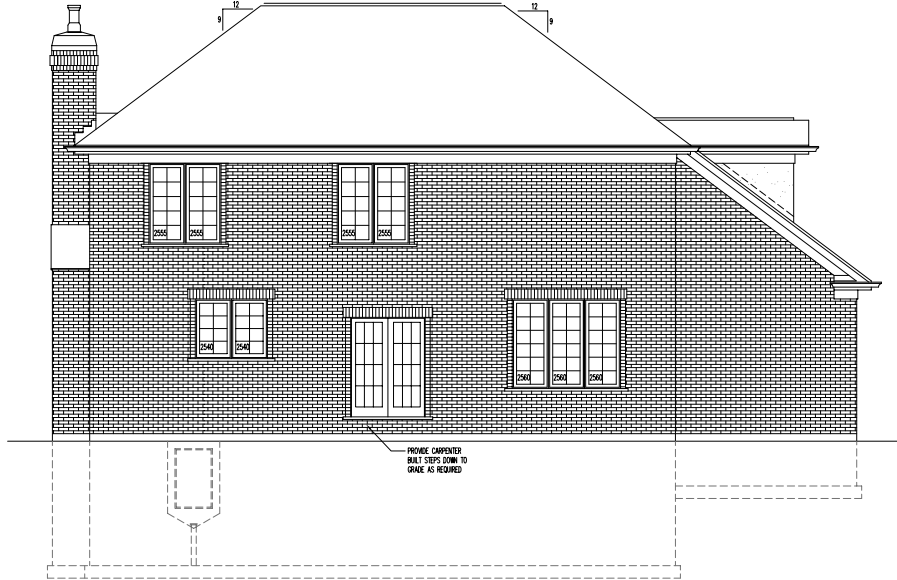
E

ELEVATION NOTES:

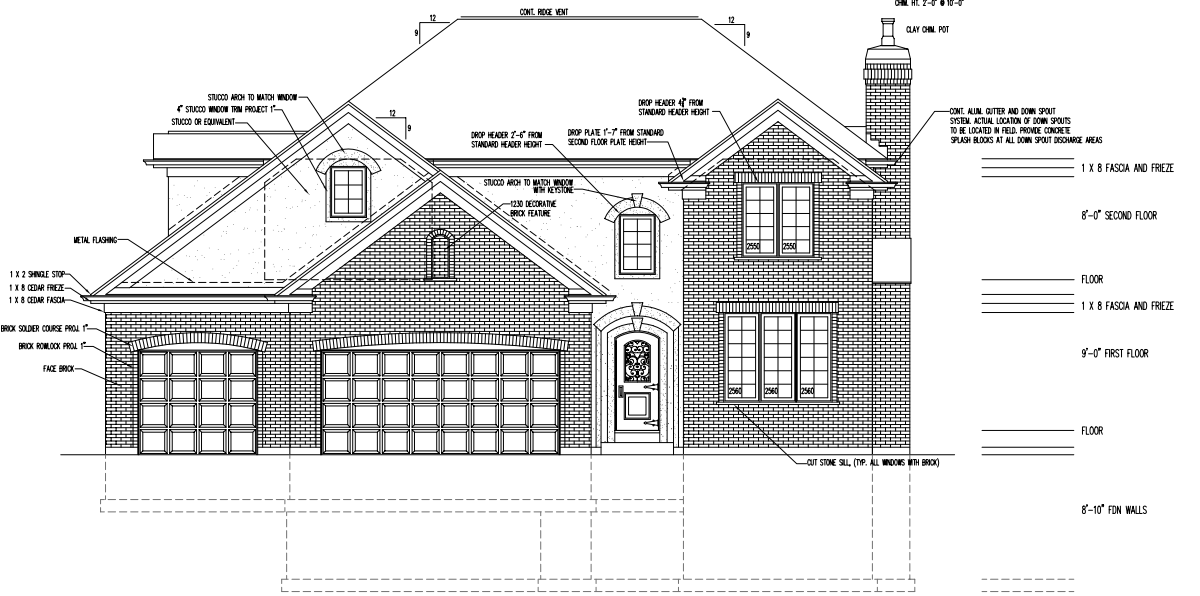
- DO NOT SCALE ELEVATIONS, VERIFY WALL HEIGHTS WITH PLANS, CONTACT ARCHITECT WITH ANY DISCREPANCIES
- WHEN INTERSECTING TWO ROOF PLANES WITH DIFFERENT ROOF PITCHES, BLOCK TOP OF STUD WALL OR BEAM AS REQUIRED TO ALLOW FASCIAS TO LINE UP, RETAINING A COMMON EAVE DISTANCE.
- SEE ROOF PLAN FOR TYPICAL EAVE AND RAKE DISTANCES UNLESS OTHERWISE NOTED ON ELEVATIONS
- IF RIDGE AND SOFFIT VENTS PROVIDE LESS THAN THE CODE MINIMUM, ADD CAN VENTS AS NEEDED TO THE REAR AND SIDE ELEVATIONS

WINDOW NOTES:

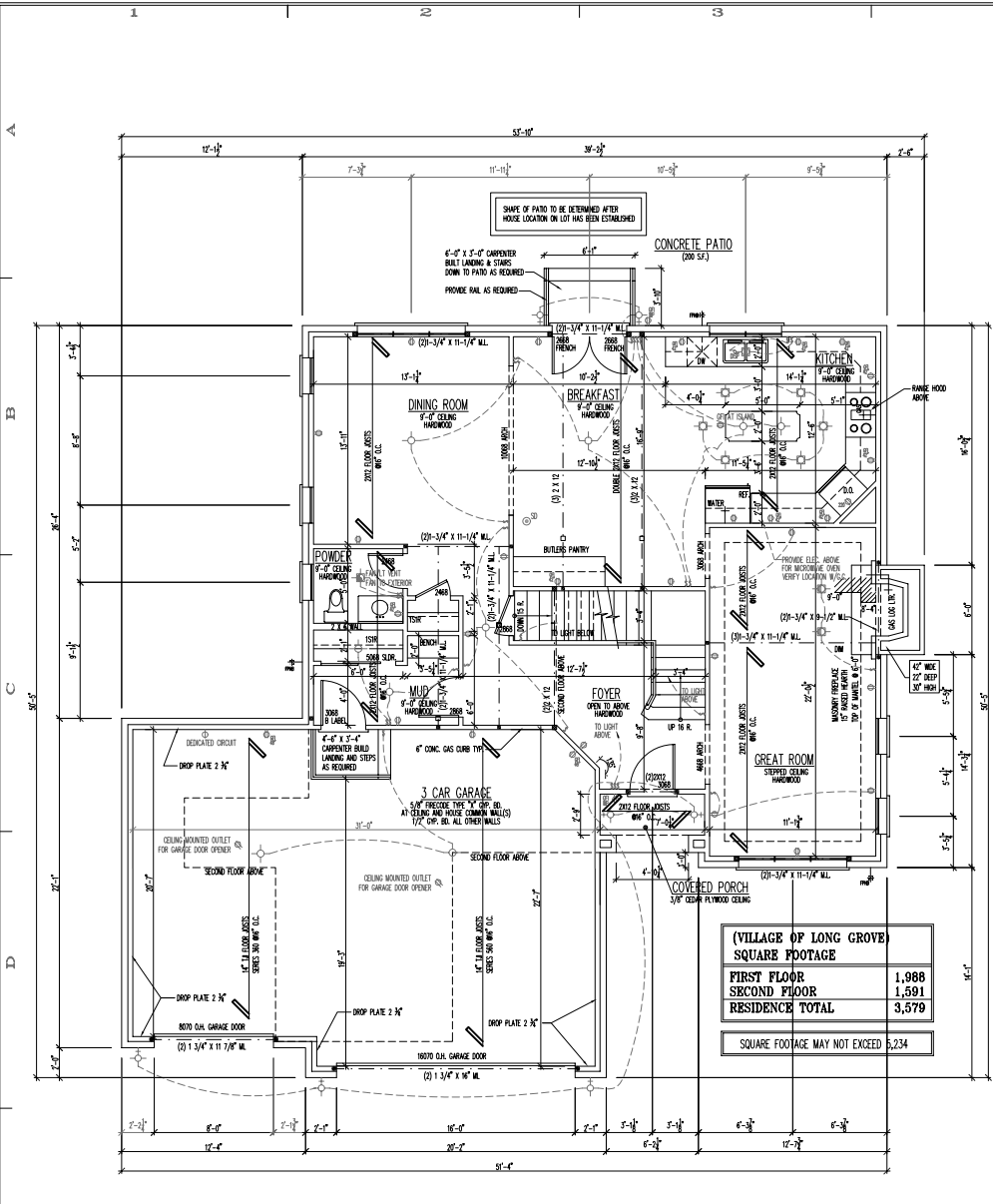
- TOP OF WINDOWS IN REMODELED AREAS TO MATCH EXISTING
- TOP OF WINDOWS 94 3/4" ABOVE SUB-FLOOR FOR 9'-0" PLATES, UNLESS OTHERWISE NOTED
- TOP OF WINDOWS 82 3/4" ABOVE SUB-FLOOR FOR 8'-0" PLATES, UNLESS OTHERWISE NOTED
- ALL WINDOWS ARE DESIGNATED IN ROUGH OPENING, SHOWN IN FEET AND INCHES. EXAMPLE: 2555 = 2'-5" X 5'-5" (TO BE MET WITHIN 2" OR EXCEEDED)
- PROVIDE (2) 2 X 12'S ABOVE ALL WINDOWS AND OPENINGS UNLESS OTHERWISE NOTED
- PROVIDE SAFETY GLAZING IN ALL WINDOWS WITHIN 24" OF MAIN ENTRY DOOR.



10
A200 REAR ELEVATION 1/4"=1'-0"



10
A200 FRONT ELEVATION 1/4"=1'-0"

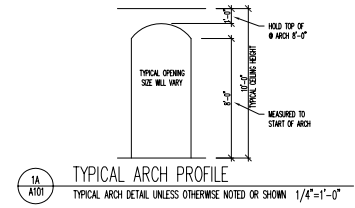


1E A101 FIRST FLOOR PLAN

1/4"=1'-0"

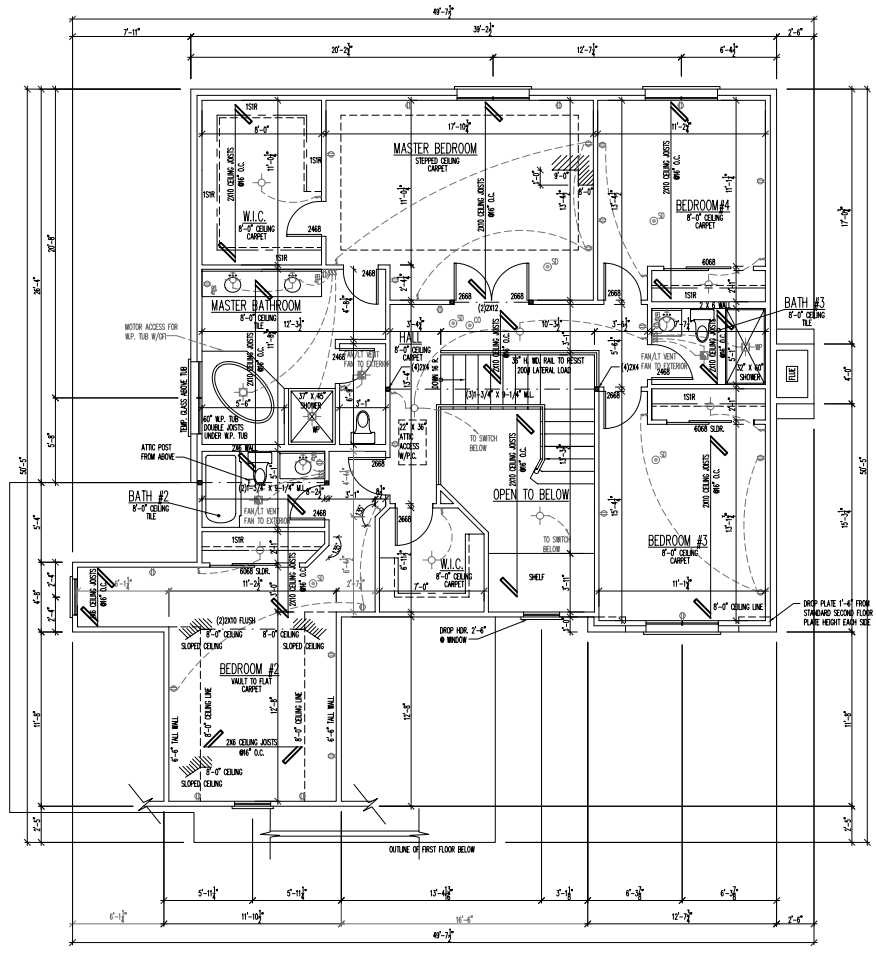
(ALA) SQUARE FOOTAGE	
FIRST FLOOR	1,988
SECOND FLOOR	1,424
RESIDENCE TOTAL	3,579

SQUARE FOOTAGE MAY NOT EXCEED 5,234



1A A101 TYPICAL ARCH PROFILE
TYPICAL ARCH DETAIL UNLESS OTHERWISE NOTED OR SHOWN 1/4"=1'-0"

WINDOW NOTES:
 * ALL WINDOWS ARE DESIGNATED IN ROUGH OPENING, SHOWN IN FEET AND INCHES
 EXAMPLE: 2555 = 2'-5" (WIDTH) X 5'-5" (HEIGHT) TO BE MET WITHIN 2" OR EXCEEDED
DOOR NOTES:
 * ALL DOORS ARE DESIGNATED BY DOOR LEAF SIZE, SHOWN IN FEET AND INCHES
 EXAMPLE: 2668 = 2'-6" (WIDTH) X 6'-8" (HEIGHT)



1E A101 SECOND FLOOR PLAN

1/4"=1'-0"

