

Preserves at Hilltop of Palatine

presented by Fidelity Wes

QUALITY INCLUDED FEATURES

EXTERIOR FEATURES

- Maintenance free vinyl siding exterior
- Aluminum soffits, fascia, gutters & downspouts
- Owens Corning® Supreme 25-year three tab roof shingles
- Type 15# felt underlayment
- Private concrete driveways
- Maintenance free energy efficient windows with screens
- Insulated six panel front door with Window
- Insulated glass door to deck
- Insulated exterior doors
- Brass Finish decorator door hardware
- Two car attached dry walled and fire-taped garage
- Raised panel garage door with window panels
- Frost proof exterior faucet in convenient location
- Exterior front and rear decorator lighting
- Basement window well with escape window
- Fully sodded front, rear and side yards
- Professionally designed and installed landscaping
- 10'x10' concrete patio or wood deck (per plan)

INTERIOR FEATURES

- 8' FULL unfinished basement (7'8" min) (9' OPTIONAL)
- 9' first floor ceilings
- 8' second floor ceilings
- Easy no-wax sheet vinyl in entry foyer
- Wall to wall carpeting in designer colors (per plan)
- Choice of 2-panel or 6-panel Colonist interior doors
- 3 1/4" painted baseboard and 2 1/4" painted door trim package
- Stairs carpeted with capped half wall
- Polished brass interior hardware
- Convenient laundry room with easy no-wax sheet vinyl (per plan)
- Large clothes, linen, and guest closets (per plan)
- Walk-in lighted closets (per plan)
- Easy-clean wire closet shelving

LUXURIOUS BATHS

- Decorative plumbing fixtures
- Tubs, showers, and surrounds (per plan)
- Cultured marble vanity tops in a variety of standard colors
- Furniture finished birch cabinetry
- Pedestal sink with designer beveled edge mirror in powder room
- Easy no wax flooring in Master bath and secondary baths
- Oversized vanity mirrors

KITCHEN

- Appliance package includes:
 - freestanding gas oven/range
 - built-in multiple cycle dishwasher,
 - re-circulating range hood
- Premium laminate countertops in a variety of designer patterns and color choices
- Double Bowl stainless steel sink
- Chrome kitchen sink faucet with side spray
- Furniture finished birch cabinetry
- Easy no-wax sheet vinyl (per plan)
- Garbage disposal

UTILITIES

- Municipal sewer and water services
- 200-amp electrical service
- 13-Seer central air conditioning
- High-efficiency gas forced air furnace
- High efficiency 40-gallon hot water heater
- Thermostat
- Advanced home prewired with telephone/television jacks (2 each included)
- Gas supply and vent hookup for optional dryer
- 1/2" conduit wiring
- Copper water pipes
- Underground utilities
- Exterior remote water meter readout

QUALITY CONSTRUCTION

- Drywall glued and screwed reducing nail pops and cracks
- Ground Fault Interrupting protection outlets
- Tyvek® or equal house wrap cap nailed for air infiltration barrier
- 3/4" sub flooring to reduce squeaks
- R-13 fiberglass insulation in all exterior walls
- R-30 batt/blown attic insulation
- 1/2" insulated wall sheathing
- Interconnected smoke detectors on each floor and in each bedroom hardwired with battery back-ups
- Carbon Monoxide detectors
- Sill sealer at exterior foundation plates to prevent air infiltration

The above features are currently proposed to be included in and specific to your Preserves of Hilltop home. In the interest of continued improvement and to meet changing market conditions, Fidelity Wes reserves the right to modify maps, floor plans, exteriors, specifications, features and product types without notice or obligations. Please consult Sales Associate for more and current information. Rev 3/07



www.fidelitywes.com

Preserves at Hilltop presented by Fidelity Wes of Palatine

!! NEW PRICING --- GREAT PLANS !!

Starting at

~~\$429,900~~

\$299,900

3 Bedroom - 2 1/2 Bath - Full Basement



The Bayberry
1,960 -2,580 s.f.

The Chestnut
1,980 -2,450 s.f.

**Palatine H.S. - Sundling Jr. High
Lincoln Elementary**

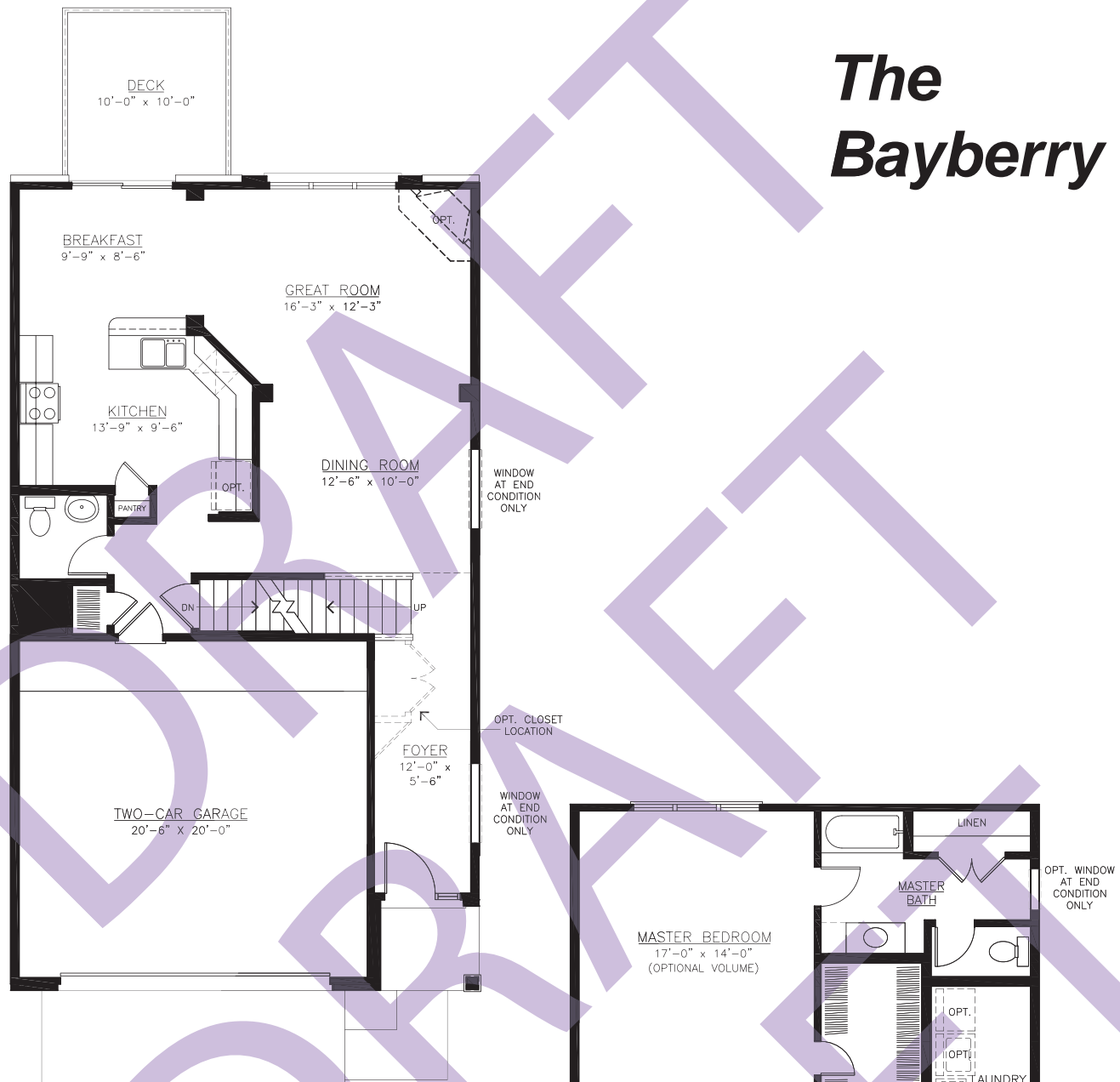
***Other options additional
Pricing subject to change without notice**

Mike 847-980-9686

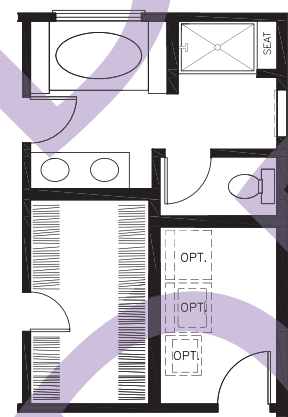


www.fidelitywes.com

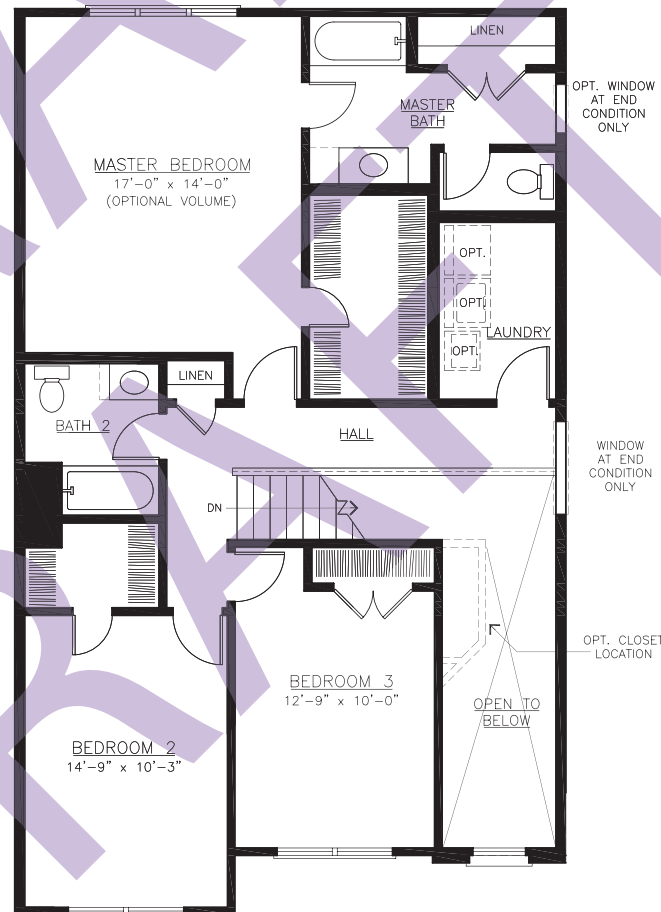
The Bayberry



FIRST FLOOR PLAN
1,429-SF

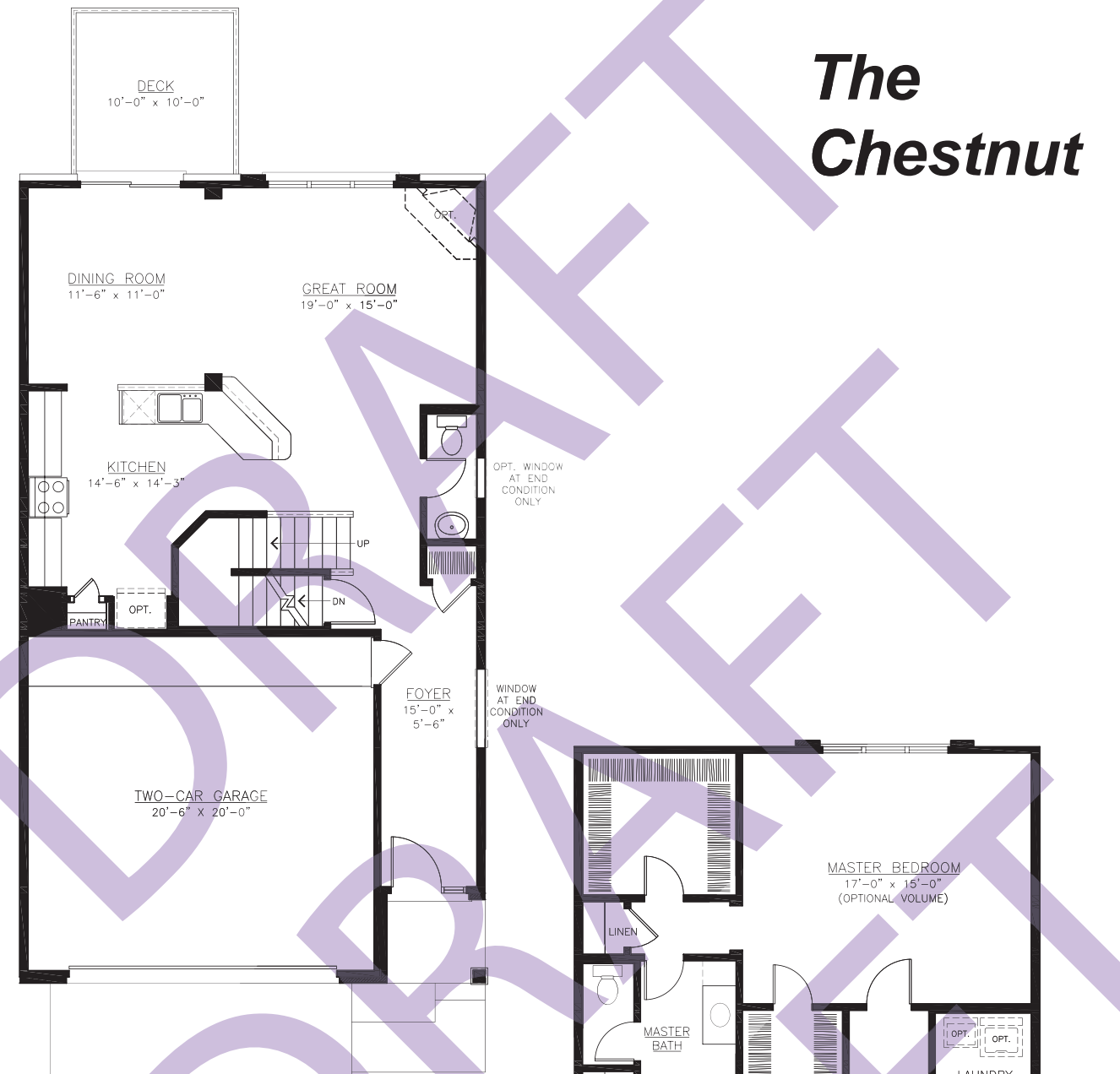


OPTIONAL LUXURY MASTER BATH

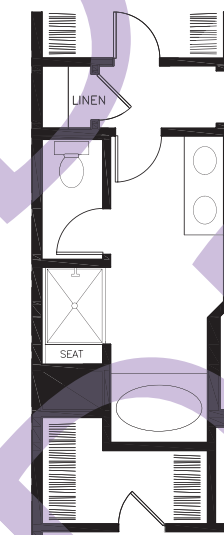


SECOND FLOOR PLAN
1,572-SF

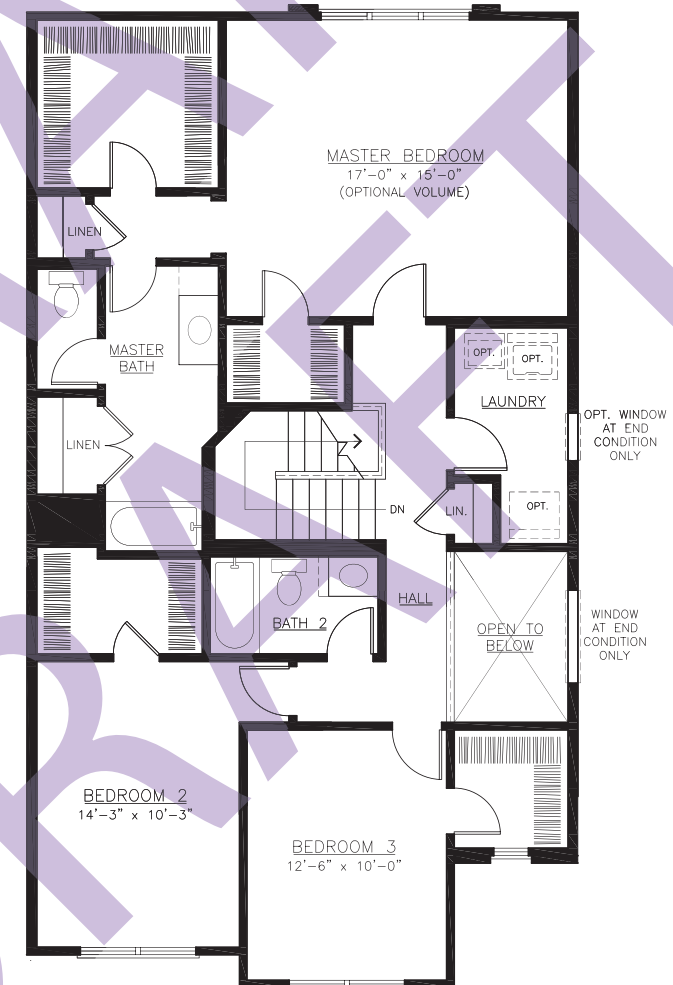
The Chestnut



FIRST FLOOR PLAN
1,391-SF



OPTIONAL LUXURY MASTER BATH



SECOND FLOOR PLAN
1,471-SF